

Figure 1. Heterogeneous distribution of trastuzumab.

| 20 mg/kg trastuzumab, 26 h

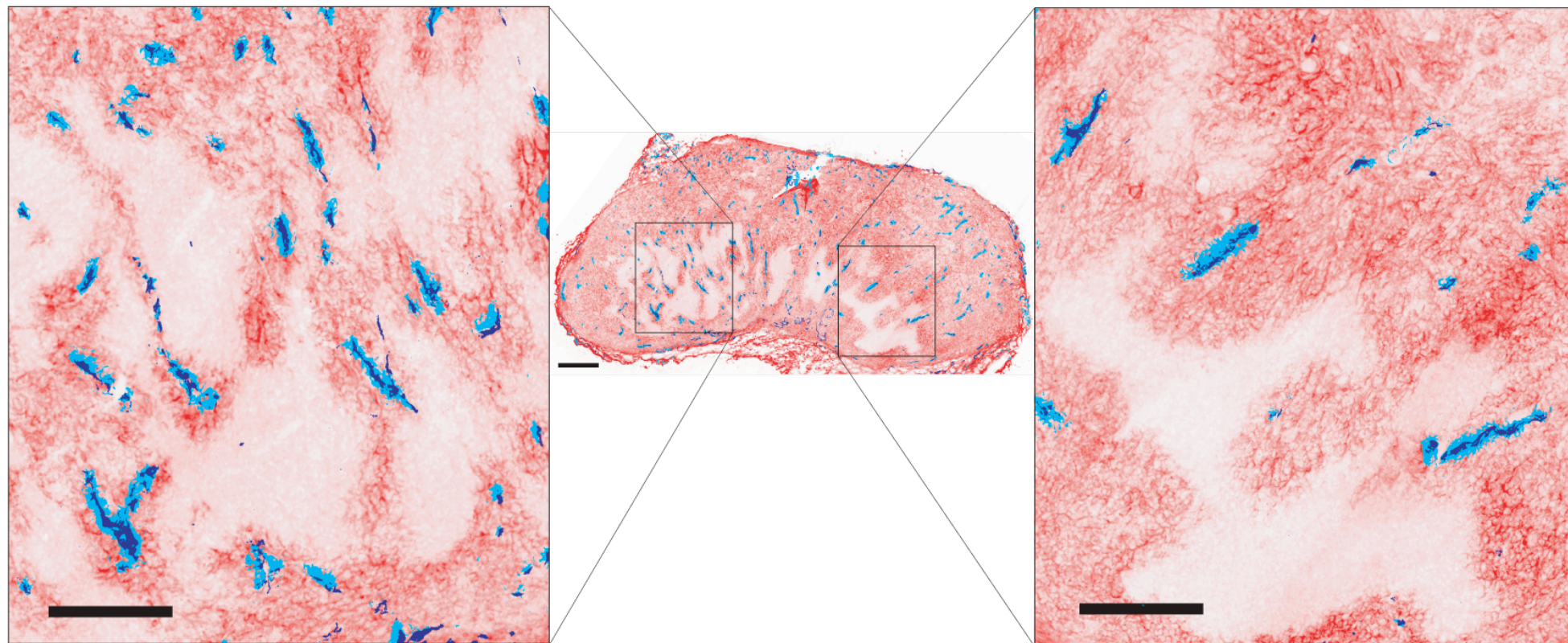


Figure 2. Hyperbranched polyglycerol (HPG) as multi-modal imaging agent.

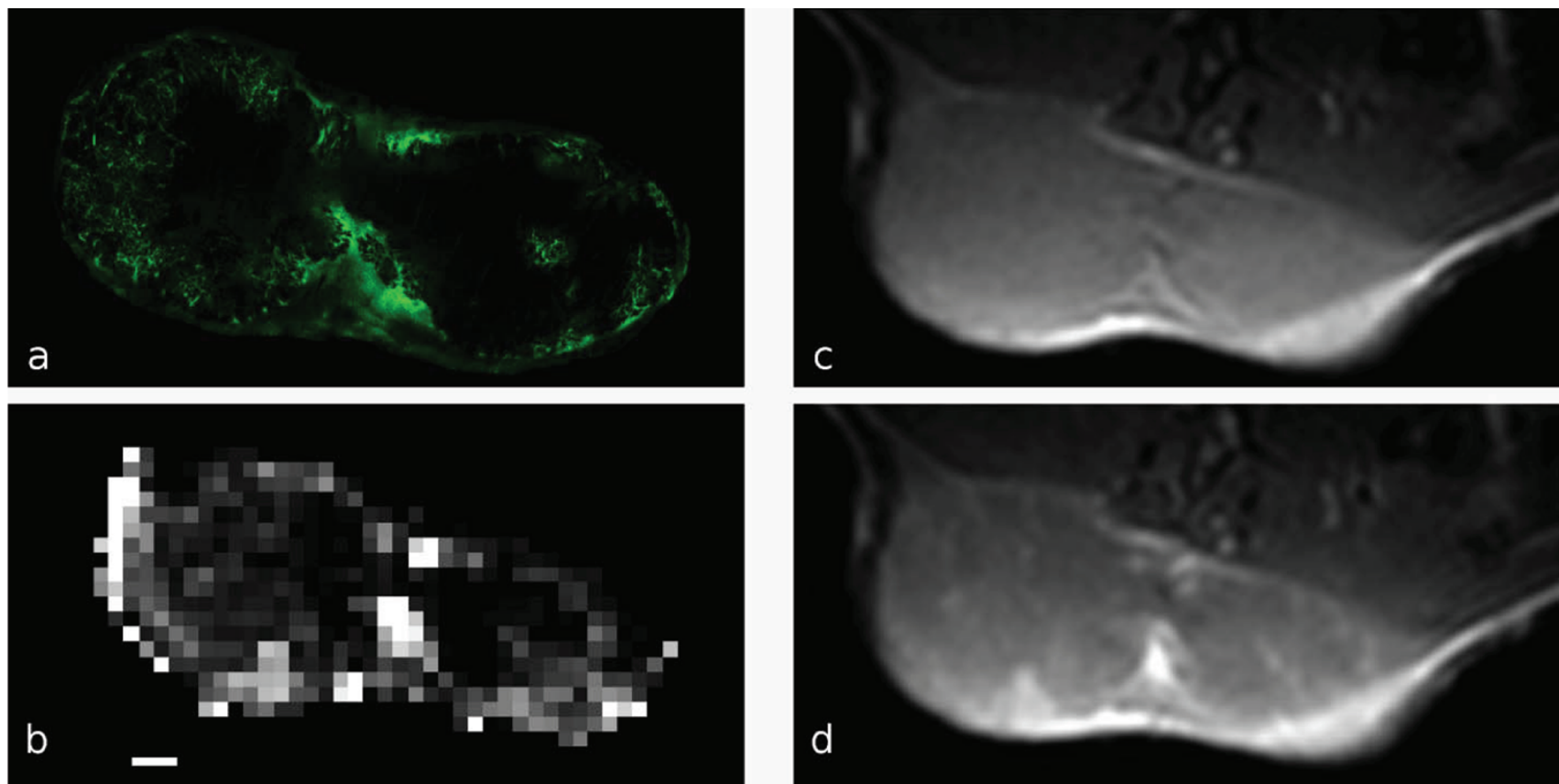


Figure 3. Correlating MR imaging with histological analysis.

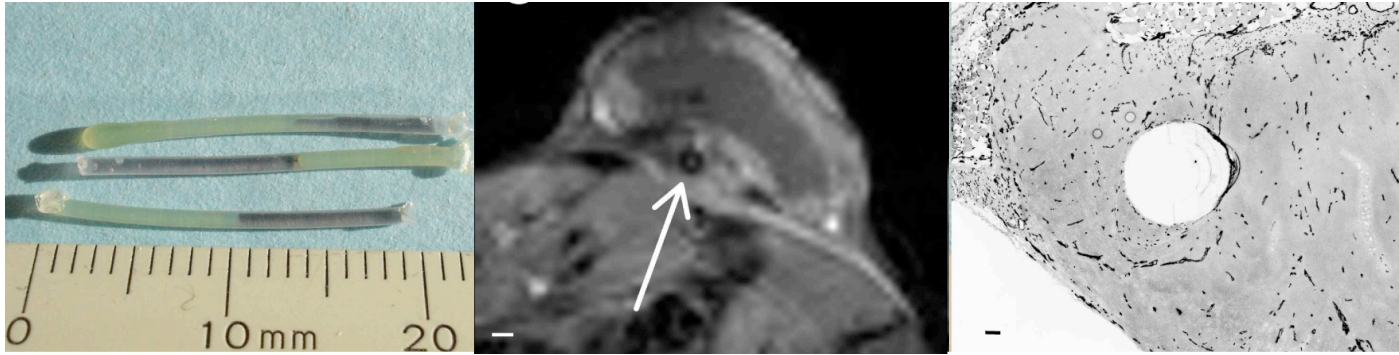
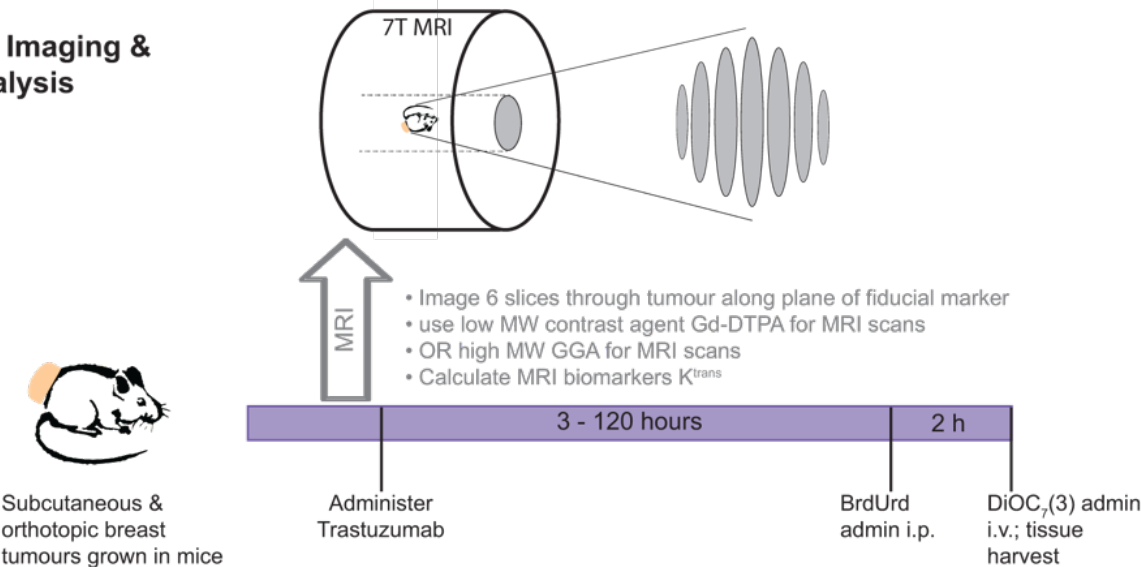
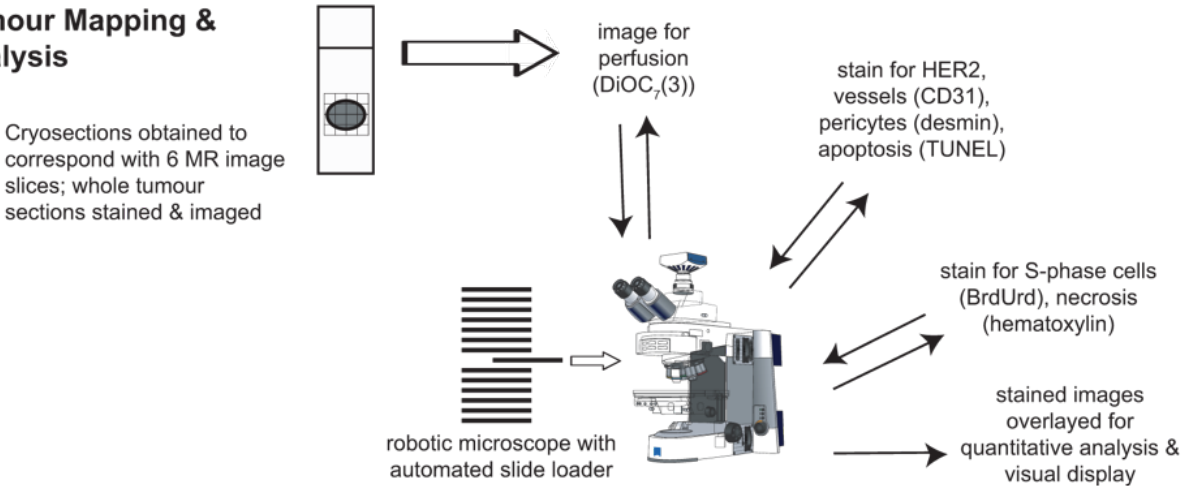


Figure 4. Experiment workflow.

A) MR Imaging & Analysis



B) Tumour Mapping & Analysis



C) Co-registration & Analysis

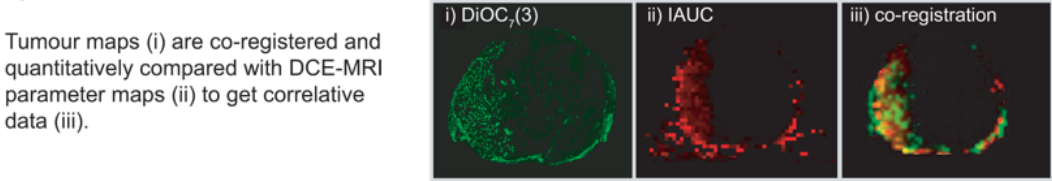


Figure 5. Correlating MRI and histological images for quantitative analysis.

